

AFT DOME LIGHT PANEL ASSEMBLY, M973

PART NUMBERS 233T7211-1,-6,-10,-13

COMPONENT MAINTENANCE MANUAL
WITH
ILLUSTRATED PARTS LIST

33-11-16

TITLE PAGE

Page 1

Mar 01/01

01



REVISION RECORD

- Retain this record in front of manual. On receipt of revision, insert revised pages in the manual, and enter revision number, date inserted and initial.

REVISION NUMBER	REVISION DATE	DATE FILED	BY	REVISION NUMBER	REVISION DATE	DATE FILED	BY

33-11-16

REVISION RECORD

01

Page 1

Mar 01/01

TEMPORARY REVISION AND SERVICE BULLETIN RECORD

BOEING SERVICE BULLETIN	BOEING TEMPORARY REVISION	OTHER DIRECTIVE	DATE OF INCORPORATION INTO MANUAL

33-11-16

TR & SB RECORD

01

Page 1

Mar 01/01


BOEING
 COMPONENT
 MAINTENANCE MANUAL

PAGE	DATE	CODE	PAGE	DATE	CODE
33-11-16			TESTING & TROUBLE SHOOTING		CONT.
TITLE PAGE			112	BLANK	
1	MAR 01/01	01	113	MAR 01/01	01
2	BLANK		114	BLANK	
REVISION RECORD			REPAIR-GENERAL		
1	MAR 01/01	01	601	MAR 01/01	01
2	BLANK		602	BLANK	
TR & SB RECORD			ILLUSTRATED PARTS LIST		
1	MAR 01/01	01	1001	MAR 01/01	01
2	BLANK		1002	MAR 01/01	01
LIST OF EFFECTIVE PAGES			1003	MAR 01/01	01
1	MAR 01/01	01	1004	MAR 01/01	01
THRU LAST PAGE			1005	MAR 01/01	01
CONTENTS			1006	MAR 01/01	01
1	MAR 01/01	01	1007	MAR 01/01	01
2	BLANK		1008	BLANK	
INTRODUCTION			1009	MAR 01/01	01
1	MAR 01/01	01	1010	MAR 01/01	01
2	BLANK		1011	MAR 01/01	01
DESCRIPTION & OPERATION			1012	MAR 01/01	01
1	MAR 01/01	01	1013	MAR 01/01	01
2	MAR 01/01	01	1014	MAR 01/01	01
TESTING & TROUBLE SHOOTING			1015	MAR 01/01	01
101	MAR 01/01	01	1016	MAR 01/01	01
102	MAR 01/01	01			
103	MAR 01/01	01			
104	MAR 01/01	01			
105	MAR 01/01	01			
106	MAR 01/01	01			
107	MAR 01/01	01			
108	BLANK				
109	MAR 01/01	01			
110	BLANK				
111	MAR 01/01	01			

* = REVISED, ADDED OR DELETED

33-11-16
 EFFECTIVE PAGES
 LAST PAGE Page 1
 01 Mar 01/01



TABLE OF CONTENTS

<u>Paragraph Title</u>	<u>Page</u>
Description and Operation	1
Testing and Trouble Shooting.	101
Disassembly*[1]
Cleaning.*[1]
Check*[1]
Repair.	601
Assembly.*[1]
Fits and Clearances (not applicable)	
Special Tools*[2]
Illustrated Parts List.	1001

*[1] Use applicable procedures in S0PM 20-11-04 and standard industry practices.

*[2] Special instructions not required.

33-11-16

01

CONTENTS
Page 1
Mar 01/01



INTRODUCTION

The instructions in this manual provide the information necessary to perform maintenance functions including test, fault isolation, and replacement of defective components.

This manual is divided into separate sections:

- | | |
|--|------------------------------|
| 1. Title Page | 4. List of Effective Pages |
| 2. Record of Revisions | 5. Table of Contents |
| 3. Temporary Revision &
Service Bulletin Record | 6. Introduction |
| | 7. Procedures & IPL Sections |

Refer to the Table of Contents for the page location of applicable sections.

An explanation of the use of the Illustrated Parts List is provided in the Introduction to that section.

All weights and measurements used in the manual are in English units, unless otherwise stated. When metric equivalents are given they will be in parentheses following the English units.

Design changes, optional parts, configuration differences and Service Bulletin modifications create alternate part numbers. These are identified in the Illustrated Parts List (IPL) by adding an alphabetical character to the basic item number. The resulting item number is called an alpha-variant. Throughout the manual, IPL basic item number references also apply to alpha-variants unless otherwise indicated.

Verification:

Testing/TS

33-11-16

INTRODUCTION

01

Page 1

Mar 01/01



AFT DOME LIGHT, M973 PANEL ASSEMBLY

DESCRIPTION AND OPERATION

1. Description

- A. The AFT Dome Light, M973 (Fig. 1) on panel P61 provides general area lighting of the flight compartment.

2. Operation

- A. AFT Dome Light Switch S1

(1) Allow the dome light to be turned on/off.

- B. FWD LAV Occupied Light L1 (For P/N 233T7211-6, -13 only)

(1) Illuminate when the forward lavatory is occupied.

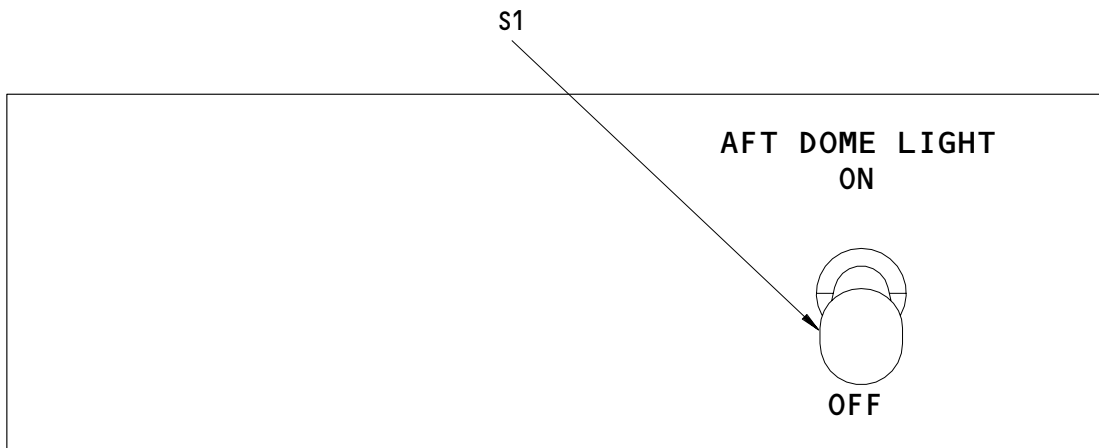
33-11-16

DESCRIPTION & OPERATION

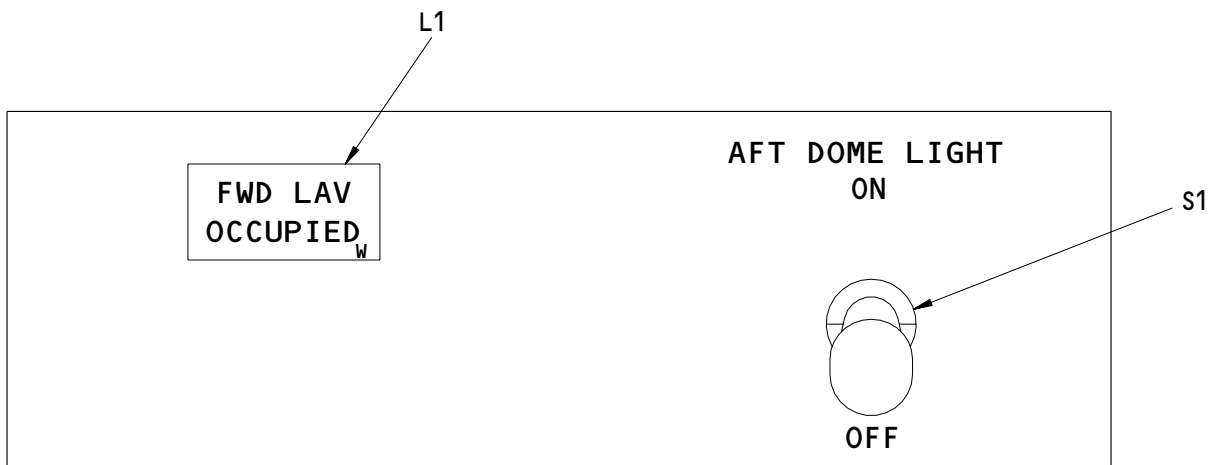
01

Page 1

Mar 01/01



233T7211-1,-10



233T7211-6,-13

233T7211-1,-6,-10,-13
Component Locations
Figure 1

33-11-16

TESTING AND TROUBLE SHOOTING1. Test Equipment

NOTE: Equivalent substitutes may be used.

A. Test Connector: BACC45FT12-12S mate with J1. Boeing A33003-2 breakout box may be used along with test cable A33003-9.

B. Power Supply

(1) DC Power Supply: 28 \pm 0.5v dc., 0.5 Amp

(2) AC Power Supply: 28 \pm 0.5v ac, 400 \pm 1 Hz @ 0.05 Amp

C. Multimeter: Simpson 260P

2. Functional Test

A. See Component Location Fig. 1

B. See Schematic Fig. 101 to 104 for P/N 233T7211-1, -6, -10, and -13, respectively.

C. See Table 101 for Functional Test of P/N 233T7211-1, -10.

D. See Table 102 for Functional Test of P/N 233T7211-6, -13.

33-11-16

TESTING & TROUBLE SHOOTING

01

Page 101

Mar 01/01

STAT NUMBER	PROCEDURE	REQUIRED RESULTS	SUSPECT COMPONENT(S)
1	Connect panel assembly with test connector J1. <u>For P/N 233T7211-1</u>		
2	Measure the resistance between J1-1 and the center of the power connector J2.	3 ohms max	J2, wiring
3	Measure the resistance between J1-2 and the baseplate.	3 ohms max	J2, wiring
4	Measure the resistance between J1-1 and J1-2. <u>For All Assemblies</u>	15 Kohms min	J2, wiring
5	Set AFT Dome Light Switch S1 to ON position.		
6	Measure the resistance between J1-5 and J1-6.	3 ohms max	S1
7	Measure the resistance between J1-5 and J1-7.	3 ohms max	S1

233T7211-1, -10
 Functional Test
 Table 101 (Sheet 1)

33-11-16

TESTING & TROUBLE SHOOTING
 01 Page 102
 Mar 01/01


BOEING
 COMPONENT
 MAINTENANCE MANUAL

STAT NUMBER	PROCEDURE	REQUIRED RESULTS	SUSPECT COMPONENT(S)
8	Set AFT Dome Light Switch S1 to OFF position.		
9	Measure the resistance between J1-6 and J1-7.	3 ohms max	S1
10	Measure the resistance between J1-5 and J1-6. Remove all connections. END OF TEST	15 Kohms min	S1

233T7211-1, -10
 Functional Test
 Table 101 (Sheet 2)

33-11-16

TESTING & TROUBLE SHOOTING
 01 Page 103
 Mar 01/01

STAT NUMBER	PROCEDURE	REQUIRED RESULTS	SUSPECT COMPONENT(S)
1	Connect panel assembly with test connector J1. <u>For P/N 233T7211-6</u>		
2	Verify the resistance between J1-1 and the center of the power connector J2.	3 ohms max	J2, wiring
3	Verify the resistance between J1-2 and the baseplate.	3 ohms max	J2, wiring
4	Verify the resistance between J1-1 and J1-2. <u>For All Assemblies</u>	15 Kohms min	J2, wiring
5	Set AFT Dome Light Switch S1 to ON position.		
6	Verify the resistance between J1-5 and J1-6.	3 ohm max	S1
7	Verify the resistance between J1-5 and J1-7.	3 ohm max	S1
8	Set AFT Dome Light Switch S1 to OFF position.		

233T7211-6, -13
 Functional Test
 Table 102 (Sheet 1)

33-11-16

TESTING & TROUBLE SHOOTING
 01 Page 104
 Mar 01/01


BOEING
 COMPONENT
 MAINTENANCE MANUAL

STAT NUMBER	PROCEDURE	REQUIRED RESULTS	SUSPECT COMPONENT(S)
9	Verify the resistance between J1-6 and J1-7.	3 ohm max	S1
10	Verify the resistance between J1-5 and J1-6.	15 Kohms min	S1
11	Apply 28 \pm 0.5v dc, 0.5 amp, (+) to J1-4, (-) J1-3.		
12	Verify the indicator L1.	Illuminate	L1
13	Remove dc power supply from J1-4 and J1-3.		
14	Apply 28 \pm 0.5v ac, 400 \pm 1 Hz @ 0.05 amp, (+) to J1-8, (-) to J1-9 to energize the relay K1.		
15	Apply 28 \pm 0.5v dc, 0.5 amp, (+) to J1-4, (-) J1-11.		
16	Verify the indicator L1.	Illuminate	L1, K1
17	Remove ac power supply from J1-8 and J1-9 to de-energize the relay K1.		

233T7211-6, -13
 Functional Test
 Table 102 (Sheet 2)

33-11-16

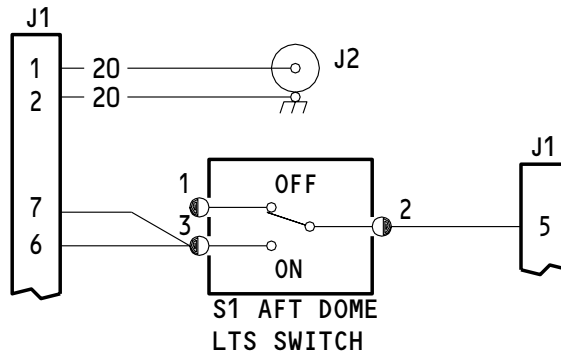
TESTING & TROUBLE SHOOTING
 01 Page 105
 Mar 01/01

STAT NUMBER	PROCEDURE	REQUIRED RESULTS	SUSPECT COMPONENT(S)
18	Verify the indicator L1.	Extinguish	L1, K1
19	Remove dc power supply from J1-4 and J1-11.		
20	Apply 28 \pm 0.5v dc, 0.5 amp, (+) to J1-3, (-) to J1-4.		
21	Verify the indicator L1.	Extinguish	L1
22	Remove dc power supply from J1-3 and J1-4.		
23	Apply 28 \pm 0.5v dc, 0.5 amp, (+) to J1-11, (-) to J1-4.		
24	Verify the indicator L1.	Extinguish	L1
25	Apply 28 \pm 0.5v ac, 400 \pm 1 Hz @ 0.05 amp, (+) to J1-8, (-) to J1-9 to energize the relay K1.		
26	Verify the indicator L1.	Extinguish	L1
	Remove all connections.		
	END OF TEST		

233T7211-6, -13
 Functional Test
 Table 102 (Sheet 3)

33-11-16

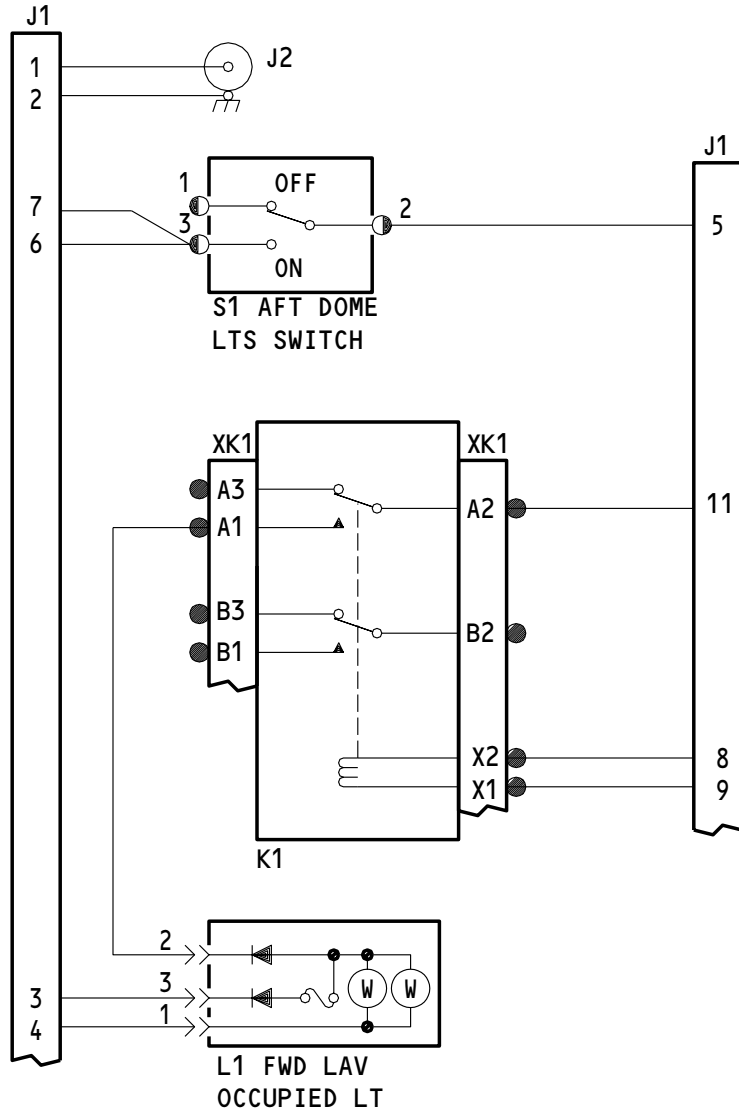
TESTING & TROUBLE SHOOTING
 01 Page 106
 Mar 01/01



NOTE: ALL WIRES BMS 13-48, TYPE I,
 CLASS 1, AWG 22 UNLESS SHOWN
 DIFFERENTLY.

233T7211-1
 Aft Dome Light Schematic Diagram
 Figure 101

33-11-16

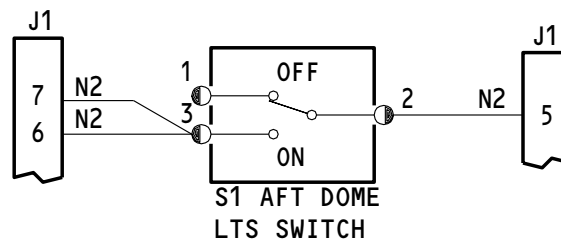


NOTE: ALL WIRES BMS 13-48, TYPE I,
 CLASS 1, AWG 22.

233T7211-6
 Aft Dome Light Schematic Diagram
 Figure 102

33-11-16

TESTING & TROUBLE SHOOTING
 01 Page 109
 Mar 01/01

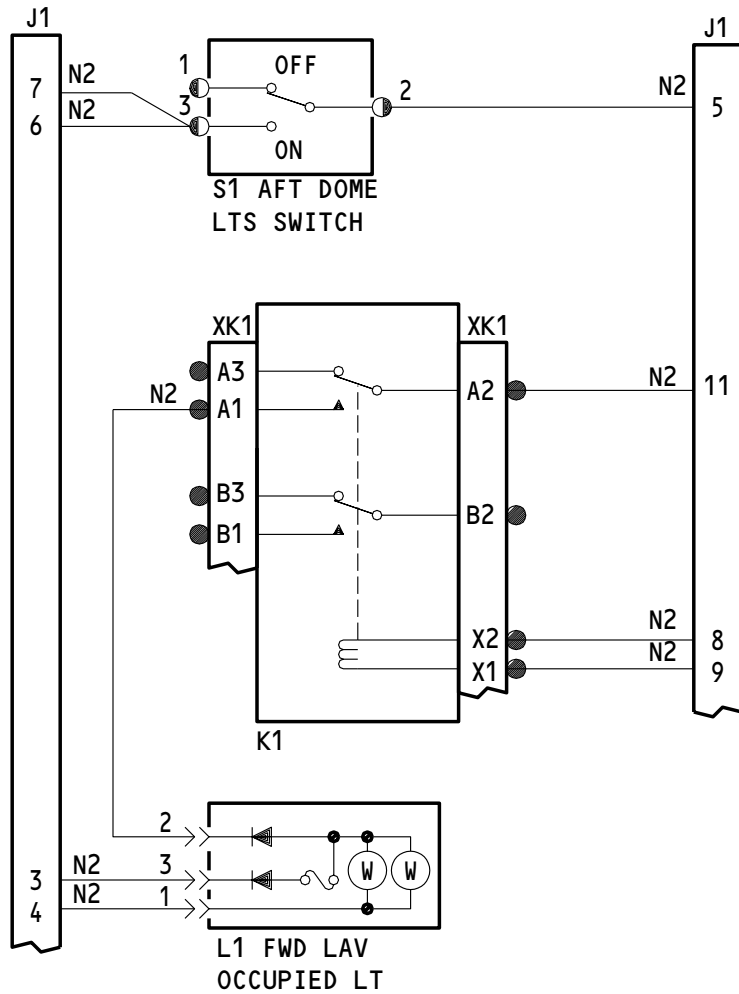


NOTE: ALL WIRES BMS 13-48, TYPE I,
 CLASS 1, AWG 22.
 ALL WIRES SEPARATION N2 (WHITE).

233T7211-10
 Aft Dome Light Schematic Diagram
 Figure 103

33-11-16

TESTING & TROUBLE SHOOTING
 01 Page 111
 Mar 01/01



NOTE: ALL WIRES BMS 13-48, TYPE I,
 CLASS 1, AWG 22.
 ALL WIRES SEPARATION N2 (WHITE).

233T7211-13
 Aft Dome Light Schematic Diagram
 Figure 104

33-11-16

**BOEING**
COMPONENT
MAINTENANCE MANUALREPAIR1. Material

- A. Loctite sealant, type 242 or 222 without primer (Loctite Corp., 705 North Mounting Road, Newington, Connecticut 06111-1411)
- B. Primer: BMS 10-11, type I (SOPM 20-60-02)
- C. Enamel: Hi-speed Lacquer, Boeing color 8328

2. All repair can be done with standard industry practices and procedures contained in SOPM 20-11-05 except as follows:

- A. Apply loctite sealant (type 242 or 222 without primer) to the threaded parts of the screws (Fig. 1-15, Fig. 2-20).
 - (1) After tightening the screws, touch up the screwheads as follows:
 - (a) Apply one coat of BMS 10-11, type I primer (SOPM 20-41-02).
 - (b) Prepare the surface and apply two coats of Hi-speed Lacquer, Boeing color 8328, flat per SOPM 20-41-04.

33-11-16

REPAIR-GENERAL

01

Page 601

Mar 01/01

ILLUSTRATED PARTS LIST

1. This section lists and illustrates replaceable or repairable component parts. The Illustrated Parts Catalog contains a complete explanation of the Boeing part numbering system.

2. Indentures show parts relationships as follows:

Assembly

Detail Parts for Assembly

Subassembly

Attaching Parts for Subassembly

Detail Parts for Subassembly

Detail Installation Parts (Included only if installation parts may be returned to shop as part of assembly)

3. One use code letter (A, B, C, etc.) is assigned in the EFF CODE column for each variation of top assembly. All listed parts are used on all top assemblies except when limitations are shown by use code letter opposite individual part entries.

4. Letter suffixes (alpha-variants) are added to item numbers for optional parts, Service Bulletin modification parts, configuration differences (Except left- and right-hand parts), product improvement parts, and parts added between two sequential item numbers. The alpha-variant is not shown on illustrations when appearance and location of all variants of the part is the same.

5. Service Bulletin modifications are shown by the notations PRE SB XXXX and POST SB XXXX.

A. When a new top assembly part number is assigned by Service Bulletin, the notations appear at the top assembly level only. The configuration differences at detail part level are then shown by use code letter.

B. When the top assembly part number is not changed by the Service Bulletin, the notations appear at the detail part level.

6. Parts Interchangeability

Optional
(OPT)

The parts are optional to and interchangeable with other parts having the same item number.

Supersedes, Superseded By
(SUPSDS, SUPSD BY)

The part supersedes and is not interchangeable with the original part.

Replaces, Replaced By
(REPLS, REPLD BY)

The part replaces and is interchangeable with, or is an alternate to, the original part.

33-11-16

ILLUSTRATED PARTS LIST

01

Page 1001

Mar 01/01

7. The MOD level codes in the nomenclature column, such as MOD A and MOD B, identify interchangeable top assemblies which have the same part number but which have differences at the subassembly or component levels. The IPL identifies each MOD level of a top assembly with a different item number and use code. The nameplate label identifies the MOD level of each assembly in the MOD LEVEL block.
8. Use substitute parts only as specified in the document D906-10182, Electrical/Electronic/Electromechanical and Mechanical Parts Substitution.

33-11-16ILLUSTRATED PARTS LIST
01 Page 1002
Mar 01/01


BOEING
 COMPONENT
 MAINTENANCE MANUAL
VENDORS

- 05617 IDD AEROSPACE CORP
 18225 NORTHEAST 76TH STREET PO BOX 97056
 REDMOND, WASHINGTON 98073-9756
 FORMERLY FARWEST ELEC INC; FORMERY IN BELLEVUE, WA;
 FORMERLY BELL IND FARWEST MFG DIV; FORMERLY BELL IND
 ILLUMINATED DISPLAYS DIV
- 08524 DEUTSCH FASTENER CORP SEE CODE V97928
- 12324 DUPREE INC STAKE FASTENER CO
 14395 RAMONA PO BOX 1797
 CHINO, CALIFORNIA 91708
 FORMERLY DUPREE MFG CO IN SOUTH EL MONTE, CALIFORNIA
 FORMERLY STAKE FASTENER CO DIV OF DUPREE INC
- 15653 FAIRCHILD FASTENERS KAYNAR PRODUCTS DIV
 800 S STATE COLLEGE BLVD
 FULLERTON, CALIFORNIA 92831-3001
 FORMERLY VK6405 MICRODOT AEROSP LTD; FORMERLY KAYNAR TECH
 KAYNAR DIV
- 58657 LEACH INTERNATIONAL OF NORTH AMERICA
 6900 ORANGETHORPE AVE PO BOX 5032
 BUENA PARK, CALIFORNIA 90622-5032
 FORMERLY LEACH CORP V35344 AND V00614
 FORMERLY LEACH CORP
- 60119 MONADNOCK CO THE
 18301 ARENTH AVENUE PO BOX 1222
 CITY OF INDUSTRY, CALIFORNIA 91749
 FORMERLY UNITED CARR FASTENER CORP VB0051 VB0056 VB0076
 FORMERLY TRW ELECTRONIC COMPONENTS CINCH-MONADNOCK DIV
 FORMERLY CINCH-MONADNOCK DIV OF TRW INC V76530
- 72962 HARVARD INDUSTRIES INC
 3 WERNER WAY SUITE 210
 LEBANON, NEW JERSEY 08833
 FORMERLY AMERACE CORP ESNA DIV
 FORMERLY ELASTIC STOP NUT IN UNION, NJ

33-11-16

ILLUSTRATED PARTS LIST

01 Page 1003

Mar 01/01

VENDORS

81590 KORRY ELECTRONIC INC SUB OF CRITON CORP
901 DEXTER AVENUE NORTH
SEATTLE, WASHINGTON 98109-3515
FORMERLY KORRY, BORIS VB0021 AND KORRY MFG CO

33-11-16

ILLUSTRATED PARTS LIST
01 Page 1004
Mar 01/01


BOEING
 COMPONENT
 MAINTENANCE MANUAL

REFERENCE DESIGNATOR INDEX (SEE SCHEMATIC DIAGRAM)		
REFERENCE DESIGNATOR	PART NUMBER	FIG-ITEM
J1	BACC45FN12-12P	1-50
J1	BACC45FN12-12P	2-55
J2	800000121-1	1-5
J2	800000121-1	2-15
K1	BACS16X2	60
L1	BCREF6587	5
L1	BCREF6587	5B
L1	S231T300-2277	5C
L1	S231T300-2277	5D
L1	S231T300-277	5A
S1	MS24658-23D	1-10
S1	MS24658-23D	2-10
XK1	JAD9E006	65

33-11-16

ILLUSTRATED PARTS LIST

01

Page 1005

Mar 01/01

PART NUMBER	AIRLINE PART NO.	FIG.	ITEM	TTL REQ
BACC45FN12-12P		1	50	1
		2	55	1
BACN10NW1		1	45	2
		2	50	2
BACN10PA06-6		1	30	2
		2	35	2
BACP10U0187N		1	35A	1
		2	40A	1
BACR13CJ1		2	65	1
BACS12CB04-5		1	40	2
		2	45	2
BACS12CB06-5		1	55	3
		2	70	3
BACS16X2		2	60	1
BACS21DD1B		1	25	4
		2	30	4
BAC27TFDE0119		1	80	1
		2	95	1
BCREF6587		2	5	1
DBMB1400-6A1		1	25	4
		2	30	4
JAD9E006		2	65	1
K19798-04		1	45	2
		2	50	2
MS24658-23D		1	10	1
		2	10	1
MS35338-41		1	60	3
MS35339-41		2	75	3
NAS514P632-5		1	15	3
		2	20	3
RMA4812-160-40		1	45	2
		2	50	2
SF6G6CBB5D		1	30	2
		2	35	2
S231T300-1277		2	5	1
233T6200-27		1	70	1
233T6200-60		2	85	1

33-11-16

 ILLUSTRATED PARTS LIST
 01 Page 1006
 Mar 01/01


BOEING
 COMPONENT
 MAINTENANCE MANUAL

PART NUMBER	AIRLINE PART NO.	FIG.	ITEM	TTL REQ
233T7211-1		1	1A	RF
233T7211-10		1	1C	RF
233T7211-11		1	20A	1
233T7211-12		1	75A	1
233T7211-13		1	1D	RF
		2	1B	RF
233T7211-14		2	25A	1
233T7211-15		2	90A	1
233T7211-16		1	1E	RF
		2	1C	RF
233T7211-2		1	20	1
233T7211-3		1	35	1
233T7211-5		1	75	1
233T7211-6		1	1B	RF
		2	1A	RF
233T7211-7		2	25	1
233T7211-8		2	40	1
233T7211-9		2	90	1
293162		1	45	2
		2	50	2
434-674-1005-12		2	5	1
69B46200-11		2	80A	3
69B46200-5		1	65	3
69B46200-6		2	80	3
800000121-1		1	5	1
		2	15	1

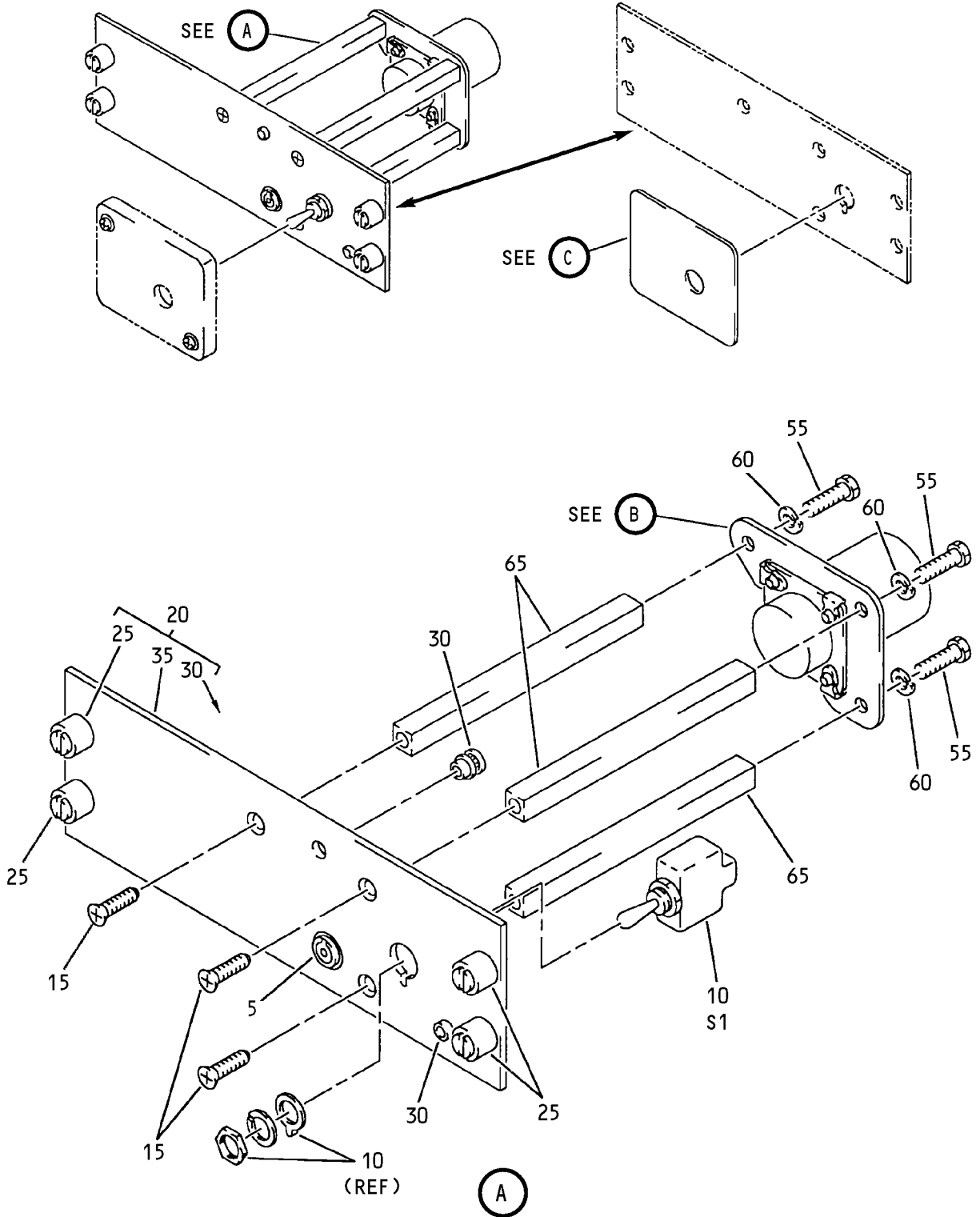
33-11-16

ILLUSTRATED PARTS LIST

01

Page 1007

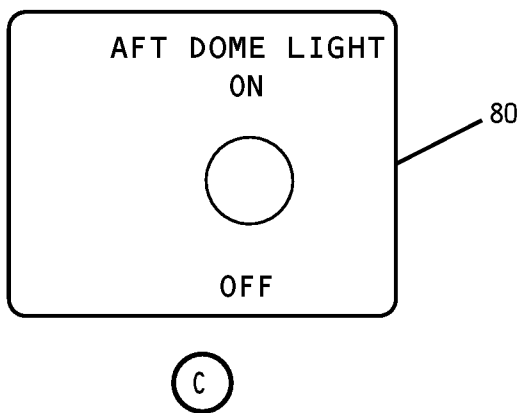
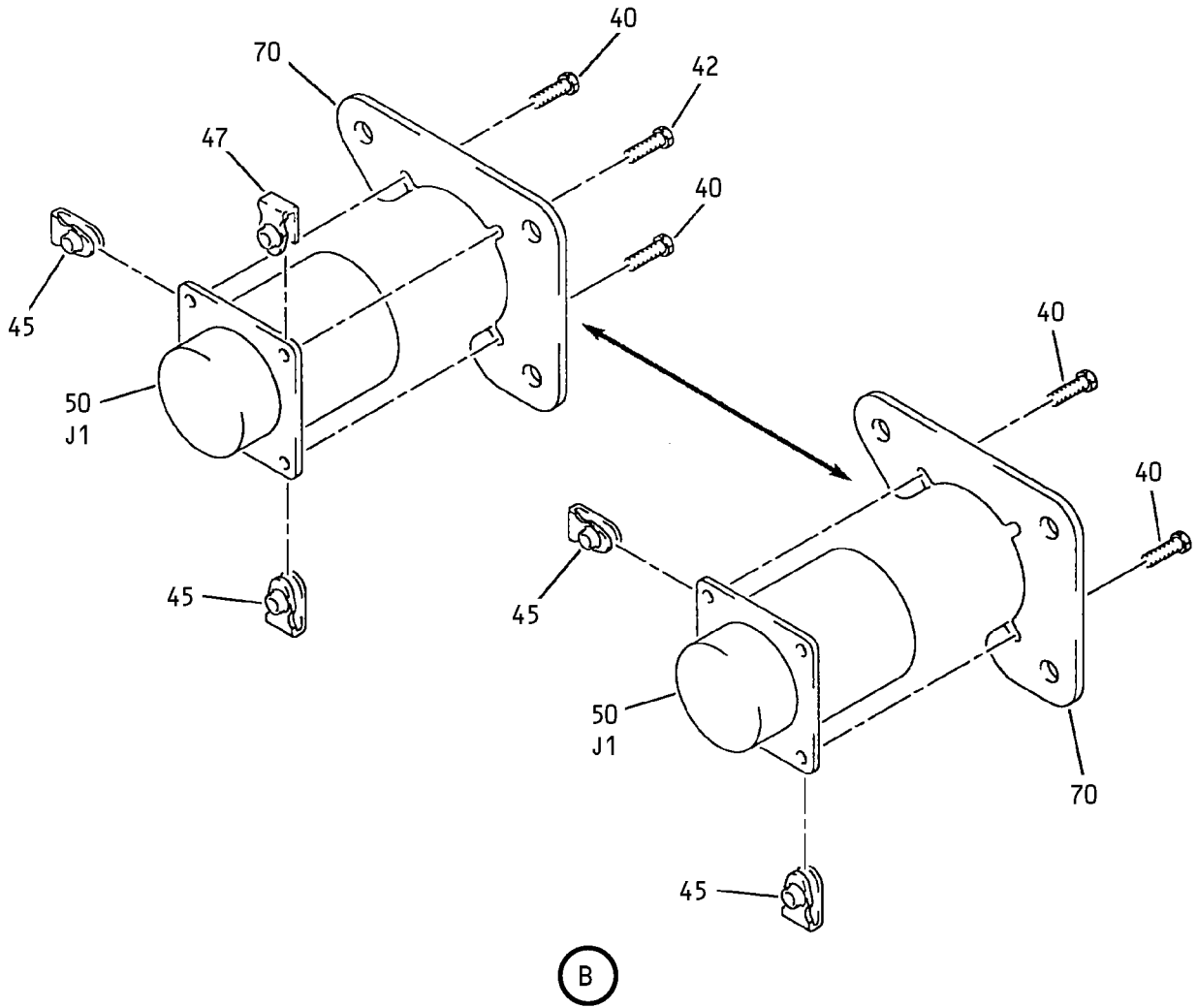
Mar 01/01



Aft Dome Light Panel Assembly, M973
Figure 1 (Sheet 1)

33-11-16

ILLUSTRATED PARTS LIST
01 Page 1009
Mar 01/01



Aft Dome Light Panel Assembly, M973
 Figure 1 (Sheet 2)

33-11-16

ILLUSTRATED PARTS LIST
 01 Page 1010
 Mar 01/01


BOEING
 COMPONENT
 MAINTENANCE MANUAL

FIG. & ITEM	PART NO.	AIRLINE PART NUMBER	NOMENCLATURE 1234567	EFF CODE	QTY PER ASSY
01- -1A	233T7211-1		PANEL ASSY-AFT DOME LT, (M973)	A	RF
-1B	233T7211-6		PANEL ASSY-AFT DOME LT, (M973) (FOR DETAILS SEE FIG. 2)	B	RF
-1C	233T7211-10		PANEL ASSY-AFT DOME LT, (M973)	C	RF
-1D	233T7211-13		PANEL ASSY-AFT DOME LT, (M973) (FOR DETAILS SEE FIG. 2)	D	RF
-1E	233T7211-16		PANEL ASSY-AFT DOME LT, (M973) (FOR DETAILS SEE FIG. 2)	E	RF
5	800000121-1		.CONNECTOR-PWR (V05617) (J2)	A	1
10	MS24658-23D		.SWITCH- (S1)	A,C	1
15	NAS514P632-5		.SCREW	A,C	3
20	233T7211-2		.PANEL ASSY	A	1
-20A	233T7211-11		.PANEL ASSY	C	1
25	DBMB1400-6A1		..STUD ASSY- (V08524) (SPEC BACS21DD1B)	A,C	4
30	SF6G6CBB5D		..NUT- (V12324) (SPEC BACN10PA06-6)	A,C	2
35	233T7211-3		..BASEPLATE	A	1
-35A	BACP10U0187N		..BASEPLATE	C	1
40	BACS12CB04-5		.SCREW	A,C	2
45	K19798-04		.NUT- (V15653) (SPEC BACN10NW1) (OPT RMA4812-160-40 (V72962)) (OPT 293162 (V60119))	A,C	2

33-11-16

ILLUSTRATED PARTS LIST

01

Page 1011

Mar 01/01

FIG. & ITEM	PART NO.	AIRLINE PART NUMBER	NOMENCLATURE	EFF CODE	QTY PER ASSY
			1234567		
01-50	BACC45FN12-12P		.CONNECTOR-(J1)	A,C	1
55	BACS12CB06-5		.SCREW	A,C	3
60	MS35338-41		.WASHER	A,C	3
65	69B46200-5		.STANDOFF	A,C	3
70	233T6200-27		.BRACKET-SPRT	A,C	1
-75	233T7211-5		.WIRE BUNDLE	A	1
-75A	233T7211-12		.WIRE BUNDLE	C	1
80	BAC27TFDE0119		.MARKER-VINYL	C	1
			BOEING LETTER HISTORY		

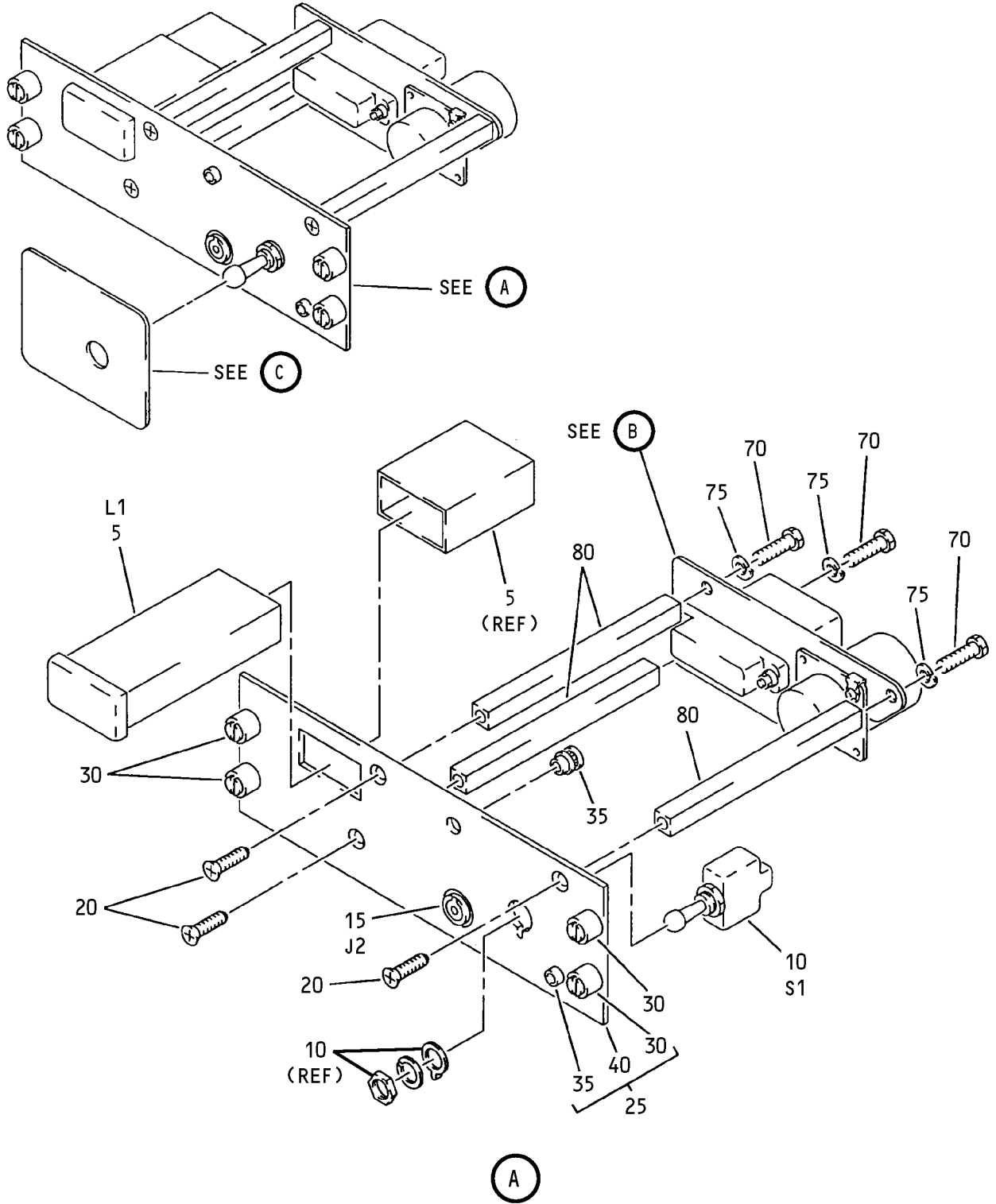
- Item Not Illustrated

33-11-16

ILLUSTRATED PARTS LIST

01 Page 1012

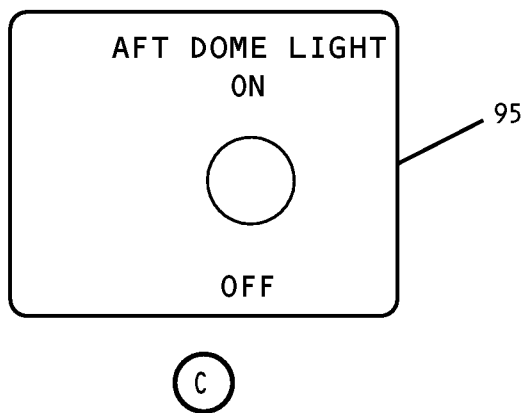
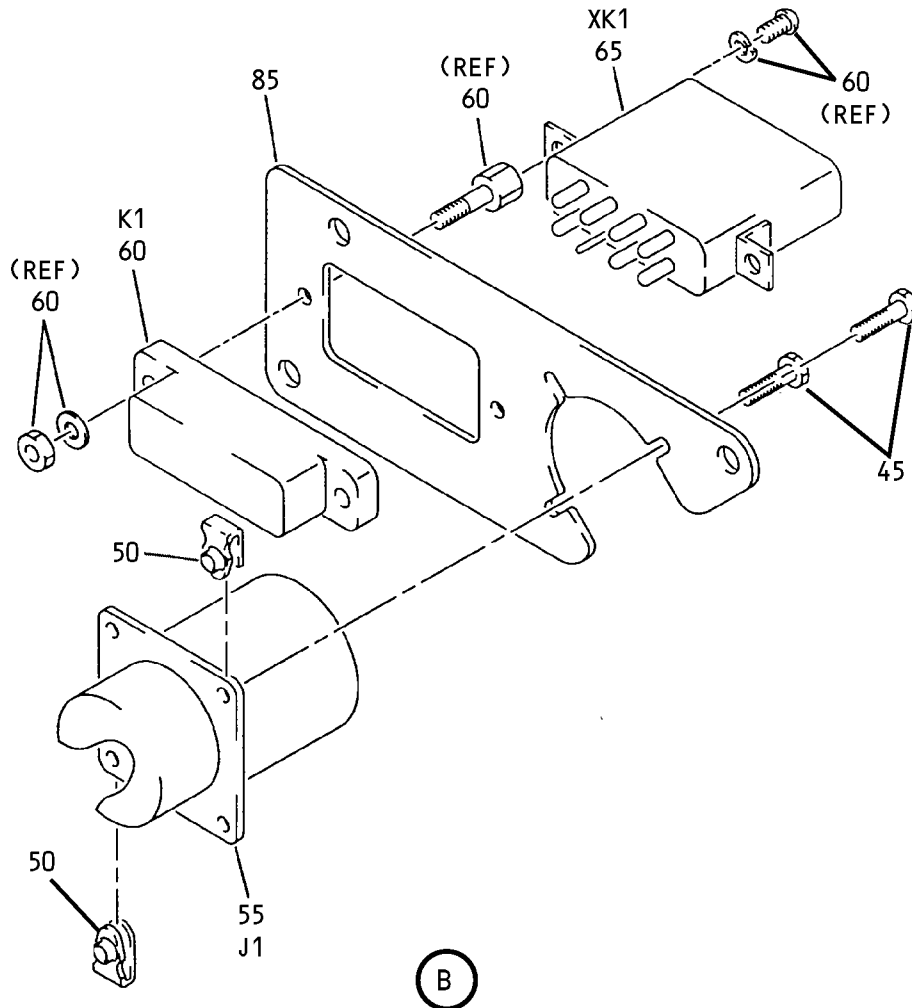
Mar 01/01



Aft Dome Light Panel Assembly, M973
Figure 2 (Sheet 1)

33-11-16

ILLUSTRATED PARTS LIST
01 Page 1013
Mar 01/01



Aft Dome Light Panel Assembly, M973
 Figure 2 (Sheet 2)

33-11-16

ILLUSTRATED PARTS LIST
 01 Page 1014
 Mar 01/01


BOEING
 COMPONENT
 MAINTENANCE MANUAL

FIG. & ITEM	PART NO.	AIRLINE PART NUMBER	NOMENCLATURE 1234567	EFF CODE	QTY PER ASSY
02- -1A	233T7211-6		PANEL ASSY-AFT DOME LT, (M973)	B	RF
-1B	233T7211-13		PANEL ASSY-AFT DOME LT, (M973)	D	RF
-1C	233T7211-16		PANEL ASSY-AFT DOME LT, (M973)	E	RF
5	BCREF6587		.LIGHTPLATE- (V81590) (434-674-1005-1277) (L1) (SPEC S231T300-1277) (OPT ITEM 5A)	B	1
-5A	S231T300-277		.LIGHTPLATE- (L1) (OPT ITEM 5)	B	1
-5B	BCREF6587		.LIGHTPLATE- (V81590) (434-674-1005-1277) (L1) (SPEC S231T300-1277) (OPT ITEM 5C)	D	1
-5C	S231T300-2277		.LIGHT IND- (L1) (OPT ITEM 5B)	D	1
-5D	S231T300-2277		.LIGHT IND- (L1)	E	1
10	MS24658-23D		.SWITCH- (S1)	B,D,E	1
15	800000121-1		.CONNECTOR-PWR (V05617) (J2)	B	1
20	NAS514P632-5		.SCREW	B,D,E	3
25	233T7211-7		.BASEPLATE ASSY	B	1
-25A	233T7211-14		.BASEPLATE ASSY	D,E	1
30	DBMB1400-6A1		..STUD ASSY- (V08524) (SPEC BACS21DD1B)	B,D,E	4

33-11-16

ILLUSTRATED PARTS LIST

01

Page 1015

Mar 01/01

FIG. & ITEM	PART NO.	AIRLINE PART NUMBER	NOMENCLATURE 1234567	EFF CODE	QTY PER ASSY
02-35	SF6G6CBB5D		.NUT- (V12324) (SPEC BACN10PA06-6)	B	2
40	233T7211-8		.BASEPLATE	B	1
-40A	BACP10U0187N		.BASEPLATE	D,E	1
45	BACS12CB04-5		.SCREW	B,D,E	2
50	K19798-04		.NUT- (V15653) (SPEC BACN10NW1) (OPT RMA4812-160-40 (V72962)) (OPT 293162 (V60119))	B,D,E	2
55	BACC45FN12-12P		.CONNECTOR- (J1)	B,D,E	1
60	BACS16X2		.SOCKET- (K1)	B,D,E	1
65	JAD9E006		.RELAY- (V58657) (SPEC BACR13CJ1) (XK1)	B,D,E	1
70	BACS12CB06-5		.SCREW	B,D,E	3
75	MS35339-41		.WASHER	B,D,E	3
80	69B46200-6		.STANDOFF	B	3
-80A	69B46200-11		.STANDOFF	D,E	3
85	233T6200-60		.BRACKET-SPRT	B,D,E	1
-90	233T7211-9		.WIRE BUNDLE	B	1
-90A	233T7211-15		.WIRE BUNDLE	D,E	1
95	BAC27TFDE0119		.MARKER-VINYL BOEING LETTER HISTORY	D,E	1

- Item Not Illustrated

33-11-16

ILLUSTRATED PARTS LIST

01

Page 1016

Mar 01/01